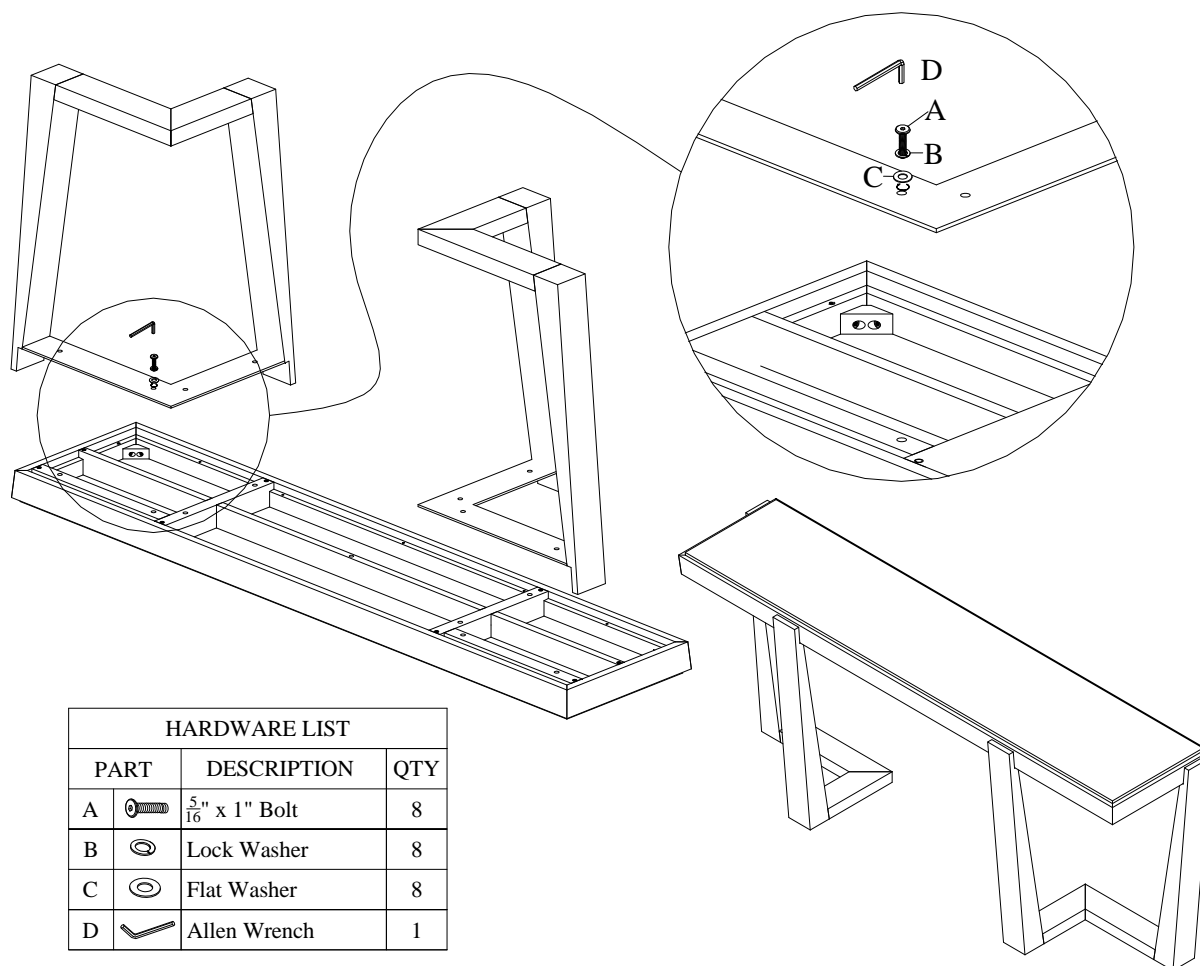






LEXINGTON®

H O M E B R A N D S

ASSEMBLY INSTRUCTIONS

734-967C Langston Console



HARDWARE LIST		
PART	DESCRIPTION	QTY
A	 $\frac{5}{16}$ " x 1" Bolt	8
B	 Lock Washer	8
C	 Flat Washer	8
D	 Allen Wrench	1

1. Place Top upside-down on flat, clean, non-marring surface.
2. Position (1) Leg on Table Top so that holes on Leg align with holes on one end of Top.
3. Use Allen Wrench (D) to attach Leg to Top with (4) of each: Flat Washers (C), Lock Washers (B), and Bolts (A). Fully tighten all bolts.
4. Repeat Steps 2-3 for other Leg on other end of Top.
5. Return assembled table to its upright position and place in desired location.

For additional consumer assistance, please contact your Lexington dealer or call our Customer Services Department at 1-336-474-5300, Monday-Friday, 8-5 Eastern.