



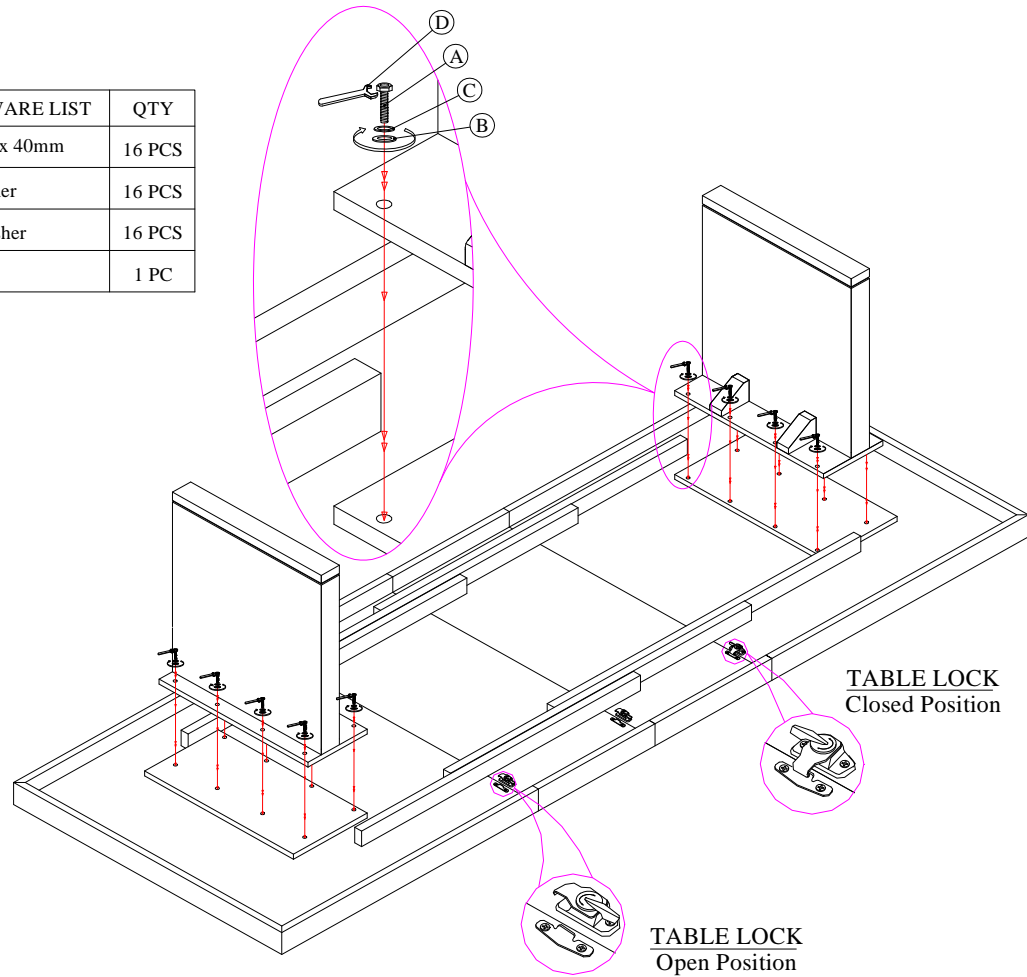


PART	HARDWARE LIST	QTY
A	 Bolt Ø8 x 40mm	16 PCS
B	 Flat Washer	16 PCS
C	 Lock Washer	16 PCS
D	 Wrench	1 PC



**To Assemble Table:**

1. Place table top upside-down on flat, clean, non-marring surface.
2. Position one pedestal on table top so that holes on pedestal align with holes in bridgeplate.
3. Use wrench (D) to attach bridgeplate to pedestal with (8) of each: flat washers (B), lock washers (C), and bolts (A). Securely tighten hardware.
4. Repeat steps 2 & 3 for other pedestal.
5. Return assembled table to its upright position and place in desired location.

**To Attach Leaf:**

1. Open table locks on underside of table, located between half-tops on each side.
2. Pull on one end of table to separate half-tops. Open table enough to insert leaf.
3. Place table leaf between half-tops so that pins on leaves align with holes on half-tops.
4. Push table on each end until fully closed.
5. Close table locks on underside of table between each leaf and half-top.

For additional consumer assistance please contact your Lexington dealer or call our Consumer Services Department at 1-336-474-5300, Monday-Friday, 8-5 Eastern