





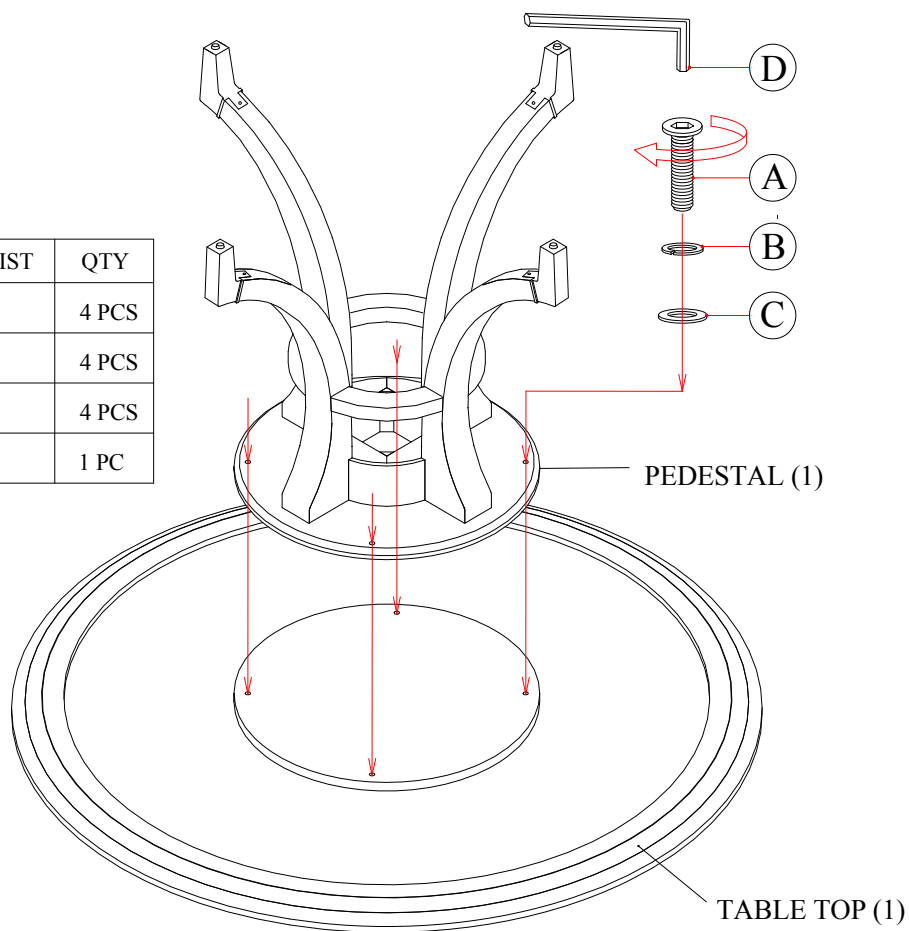
# LEXINGTON®

## H O M E B R A N D S

### ASSEMBLY INSTRUCTIONS

#### 415-875C Lombard Round Dining Table

PART		HARDWARE LIST	QTY
A		Bolt Ø $\frac{5}{16}$ " x 1-½"	4 PCS
B		Lock Washer	4 PCS
C		Flat Washer	4 PCS
D		Allen Wrench	1 PC



1. Place Table Top upside-down on flat, clean, non-marring surface.
2. Position Pedestal on Table Top so that holes on Pedestal bridgeplate align with holes on Table Top bridgeplate.
3. Use Allen Wrench (D) to attach Pedestal to Top with (4) of each: Flat Washers (C), Lock Washers (B), and Bolts (A). Fully tighten all bolts.
4. Return assembled table to its upright position and place in desired location.